

**SHRAWLEY  
PARISH  
PLAN  
2005**



**Preserving our environment for future generations**

# The Structure of the Parish Plan

## THE PLAN SECTIONS

**Shrawley Parish Overview**  
**Introduction & Background**  
**The Parish Survey**  
**Summary Issues and Actions for each of 9 Key areas**

**Detailed Issues and Actions for each of 9 Key areas**  
 (Available in a separate document on request from the Parish Council and via the Shrawley Web Site )



## THE 9 KEY AREAS

- 1 The Environment
- 2 Transport & Highways
- 3 Planning & Housing
- 4 The Church
- 5 Shopping & Services
- 6 Communication & Local Government
- 7 Education, Employment & Training
- 8 Sport, Recreation & Leisure
- 9 Emergency, Health & Public Services

## ABBREVIATIONS

MHDC

Malvern Hills District Council

WCC

Worcestershire County Council

Q1/Q2/Q3/Q4

Quarter 1 ( Jan/Feb/Mar )

Quarter 2 ( Apr/May/June )

Quarter 3 ( July/Aug/Sep )

Quarter 4 ( Oct/Nov/Dec )

# Shrawley Parish Overview

Shrawley is a scattered settlement with a population of around 350. It is situated mainly along a 1.5 mile stretch of the B4196, some 4 miles south of Stourport-on-Severn. Set within an attractive agricultural landscape, the village is bounded to the east by the ancient Shrawley Wood, which leads down to the River Severn.

The only shop and Post Office ceased trading in 2003 whilst the village primary school was closed over 25 years ago. Shrawley still retains a church, dating back to the 11<sup>th</sup> century, a village hall, a small hotel and two pubs that serve meals. There are also 3 caravan parks, providing weekend and holiday homes.

Shrawley lies within the Malvern Hills District Council area, whose administrative centre is 15 miles away in Malvern. However, it is in Worcester, Kidderminster and Droitwich Spa, all 9 miles distant, where most of the major services and shopping facilities are to be found, complementing those available locally in either Stourport or the neighbouring villages of Holt, Ombersley and Great Witley.

Although the total population of Shrawley is little changed since the 1950's, a significant feature of the latest census is the substantial decline over the past 20 years in the proportion of younger people (now well below both the Malvern Hills District and national average) with a much higher preponderance of 45 to 64 year olds.

	Shrawley 2001	Shrawley 1991	Shrawley 1981	MHDC 2001	National 2001
• under 16	12%	17%	24%	18%	20%
• 16 to 24	6%	12%	13% (e)	10%	11%
• 25 to 44	25%	25%	23% (e)	24%	29%
• 45 to 64	40%	28%	25% (e)	27%	24%
• 65 & over	17%	18%	15%	21%	16%

This high concentration of the middle aged may be influenced in part by the closure of the village school and also a wish by some to move nearer to mainstream services before they become less mobile. The structure of the housing market may also be a factor; 80% owner occupied with only 3% housing association, whilst almost 70% of the properties are detached. The change in the age profile is probably irreversible and could even have further to go with the high price of housing limiting potential purchasers.

Another characteristic is the high level of educational attainment; 39% have 2 "A" levels or above compared to only 28% nationally. This is reflected in employment where almost 60% are classed as Professional or Managerial and a further 20% have their own business. The population of Shrawley is very dependent on the car, both for work and socially, with 58% of households having 2 or more cars, double the national average.



## THANK YOU

The Countryside Agency

Warwickshire & Worcestershire  
Rural Partnership

The Parish Plan Steering Group  
members :

Chris Freeman  
Michael Howard  
Barbara Jones  
Tom Marsden  
Jenny Nicholson  
Mike Partridge  
Richard Tesh



## Introduction & Background

In 2003 the Parish Council agreed that it would be sensible to conduct a Parish Survey to determine how residents feel about local issues such as housing, employment, roads, shops, recreation, the environment, etc. and what changes (if any) they would like to see. We received initial funding from the Warwickshire and Worcestershire Rural Partnership.

A well attended public meeting was held in June 2003 and following this meeting a small steering group was formed to take the idea forward. A grant was obtained from the Countryside Agency to enable the parish to devise its own Parish Plan. After several meetings a Survey was devised and this was sent out to all households in November 2003.

A report from the Survey was distributed to all households in March 2004, and following a parish meeting in April 2004 and discussions with various interested groups a draft Parish Plan was produced in October 2004. This was approved by the Countryside Agency and a copy of the plan excluding the detailed actions is being distributed to all households in the parish in late 2004.

## What will the Parish Plan achieve ?

The Parish Plan sets out a vision of what is important.

It suggests how to preserve valued local features and how new development can be incorporated. It maps out the facilities that the parish needs to secure its future as a good place to live and work.

It aims to establish an agreed framework against which the Parish Council and village societies can assess opportunities and future direction.

The detailed action plan sets out the route to address the key issues and will be updated annually by the Parish Council. It will also guide actions and priorities in dealing with other statutory bodies, agencies, individuals and organisations.

## THANK YOU

Everybody who responded  
to the Parish Survey



## The Parish Survey

The Parish Survey was conducted in November and December 2003.

There were 161 dwellings in the parish, 12 of which were effectively unoccupied. From the remaining 149 dwellings we received 110 responses, a total of 74%. The surveys represented the opinions of 266 people in the parish.

The method of collection was for each steering group member to be responsible for a subset of the community (20 to 25 each). Each member then summarised results from the returns, which were then consolidated separately.

This ensured individual confidentiality, as only one person has seen each survey return, however this has also meant that we have not been able to complete any cross analyses, for instance variability of response by age or location.

Our thanks must go to everyone who took the time to answer the survey. The most comments were related to three areas - environment, housing development and traffic issues.

Copies of the Parish Survey report which analysed the responses have been distributed to all parish households and are available from the Parish Council, and on the Shrawley Web Site.

The local environment, community and lifestyle are extremely important to Shrawley's residents. Whilst many may wish to see Shrawley stay essentially as it is, the village will need to evolve and develop, but in ways that maintain its current attractiveness.

## The Objectives of the Parish Survey

- To have a comprehensive consultation with the community
- To enable a representative sample of views in the Parish to be expressed
- Find what problems or unmet needs there are in the Parish
- Find out what we want our community to be like in the future
- To provide the quantitative and qualitative information necessary to establish this Parish Plan.



## THE ISSUES

### EN1 - Natural Environment

The skyscape  
Shrawley woods  
Hedgerows and trees  
More roadside bulbs

### EN2 - Built Environment

Prevention of light pollution  
Improvement of unsightly locations



# 1 The Environment ( a )

## THE VISION

Preservation of the existing landscape, with appropriate enhancement in keeping with the rural village environment.

### THE MAIN ACTIONS

#### EN1

Work with the Forestry commission to maintain the Woods plan.  
Work with MHDC to ensure protection of the skyscape.

#### EN2

Work with MHDC to ensure that planning applications that damage the environment are resisted and those which improve the environment are assisted.  
Planting of roadside bulbs in September/October.

### TIMESCALE

Q1 2005 and ongoing

Q3 2005 and ongoing

### INVOLVEMENT

The Parish Council  
MHDC  
WCC  
Forestry Commission

## POLICY STATEMENT

The Parish Council will work with MHDC, WCC, the Forestry Commission and other agencies to ensure that the local structure plans, management plans and adopted policies recognise the importance of maintaining the attractiveness of the existing landscape in and around Shrawley.

The Council will continue to work with the Forestry Commission to produce a sustainable plan for Shrawley Woods that enables residents and visitors to enjoy the natural environment.

The Council will encourage the planting of additional trees, hedgerows and roadside bulbs in appropriate locations throughout the parish.

# 1 The Environment ( b )

## THE VISION

Preservation of the existing landscape, with appropriate enhancement in keeping with the rural village environment.

### THE MAIN ACTIONS

#### EN3

Ascertain viability of mains sewerage and work with MHDC to ensure that all developments comply with sustainable drainage principles.  
Ensure current drainage systems are effective and comply with regulations.

#### EN4

To investigate the placing of litter bins, in conjunction with a lengthsman scheme.  
To encourage the use of recycling facilities at Broomfields in Holt Heath.

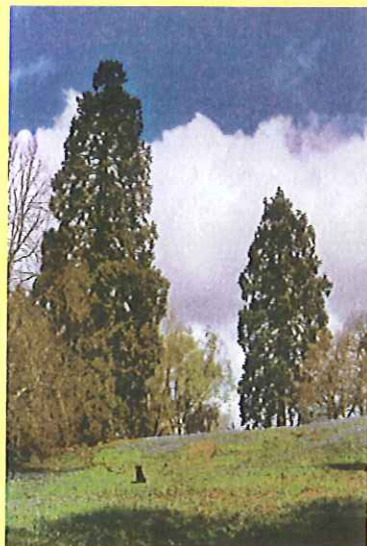
### TIMESCALE

Q3 2005 and ongoing

Q3 2005 and ongoing

### INVOLVEMENT

The Parish Council  
MHDC  
WCC  
Forestry Commission



## THE ISSUES

### EN3 - Drainage & Sewage

Lack of mains sewers  
Excess surface water  
Need for cesspits/septic tanks to work effectively

### EN4 - Litter

Litter along the B4196  
Dog faeces in and around Shrawley woods  
Effective recycling and waste disposal facilities

## POLICY STATEMENT

The Parish Council will work to find ways of ensuring that the drainage and sewerage systems within the Parish are maintained to the standard necessary to avoid environmental pollution.

The Council will support and finance the implementation of a Lengthsman scheme in conjunction with other adjoining parishes, as a way of improving the day to day maintenance of the roadsides.  
(A Lengthsman is a contractor who will maintain the hedges, verges and public areas of the Parish on a continuous basis)

## THE ISSUES

TR1  
Various road danger spots  
(especially on the B4196)

TR2  
Public Bus Service

TR3  
Limited private taxi service  
options



## 2 Transport & Highways

### THE VISION

Parish roads being as safe as possible for all road users, and the maintenance of viable transport options other than the private car for those who wish to use them.

#### THE MAIN ACTIONS

TR1  
A realistic reduction in traffic speed at certain locations using the 3 E's - Education/Engineering/Enforcement.  
A reduction in HGV traffic - traffic census and signage at both ends of the B4196.  
Improvement of footways (esp. Rose & Crown to Glazenbridge via New Inn and Hayes Corner to the Village Hall).  
TR2  
Smaller buses with an enhanced timetable and seating at bus stops.  
TR3  
Investigation of transport pooling schemes.

#### TIMESCALE

Q2 2005 and ongoing

Q2 2005 and ongoing

Q1 2006

#### INVOLVEMENT

The Parish Council  
MHDC  
WCC

### POLICY STATEMENT

The Parish Council will work with Worcestershire County Council, Malvern Highways Partnership, West Mercia Police and other agencies to ensure that the road system in and around Shrawley is well maintained and that best practice measures are used to minimise accidents and incidents.

The Council will work to ensure the appropriate provision of safe footways where there is significant pedestrian traffic.  
The continuation of the Worcester to Stourport bus service will be encouraged and the use of the B4196 by HGV's will be discouraged.



## THE ISSUES

PL1/PL4  
Development needs to be appropriate and proportionate  
PL2/PL3  
Lack of low cost housing  
PL5  
Business Development needs to be sited appropriately  
PL6  
On road parking is a hazard  
PL7  
Unscreened high walls



## 3 Planning & Housing

### THE VISION

A community of attractive well maintained buildings blending with the rural environment, with limited infilling and no new developments except in exceptional cases where they will materially enhance the village community in some way.

#### THE MAIN ACTIONS

PL1/PL2/PL3/PL4/PL5/PL7  
The Parish Council will continue to press MHDC to take full note of local concerns on planning issues.

#### TIMESCALE

Ongoing

#### INVOLVEMENT

The Parish Council  
MHDC  
WCC

### POLICY STATEMENT

The Parish Council will continue to influence, as far as it can, the development of the Malvern Hills District Plan and other policies to ensure that the adopted policies are appropriate to the needs of Shrawley.

The Council will support the view that within reason all house owners should be free to do what they wish with their own properties, providing it is consistent with reasonable planning policy.

The Council will be critical of and where appropriate oppose any proposal that has an adverse effect on the skyline, eg wind farms, mobile home expansion and aerals.



### THE ISSUES

- CH1 The Church fabric is in need of constant repair
- CH2 The Churchyard is in need of continual maintenance
- CH3 The Church building and external lighting need to be enhanced
- CH4 The Church building is not friendly to disabled people

## 4 The Church

### THE VISION

A church building that is kept in appropriate condition, preserving it for the use of future generations, and that is available for all parishioners to use for worship and religious ceremonies.

THE MAIN ACTIONS	TIMESCALE	INVOLVEMENT
CH1 Fundraising activity to be owned by the Friends of St Mary's.	Ongoing	The Friends of St Mary's The Village Fete Committee The Parochial Church Council The Parish Council
CH2 Volunteer effort to be organised and managed by the Friends of St Mary's.	Ongoing	
CH3 Addition of a toilet, kitchen, small meeting room and improved lighting.	2006 onwards	
CH4 Installation of an induction loop system and wheelchair ramps.	2006 onwards	

### POLICY STATEMENT

The Parish Council will continue to help to support the church financially where appropriate and actively facilitate the application for grants and funding, and encourage volunteer effort from within and outside the Parish.

### THE ISSUES

- SS1 No local shops in the village
- SS2 High cost of rural energy
- SS3 No mains gas
- SS4 Need to enhance the Village Hall facilities



## 5 Shopping & Services

### THE VISION

Local services, including a limited availability post office and shop so that those living in the parish can reduce the need to travel and a community buying facility to get the best available fuel pricing for all.

THE MAIN ACTIONS	TIMESCALE	INVOLVEMENT
SS1 The Parish Council will encourage the development of shopping services within the village.	Ongoing	The Parish Council The Village Hall Trustees
SS2/SS3 Options for cheaper energy will be investigated, and highlighted in the Parish Magazine.	Q3 2005	
SS4 Obtain funding for Village Hall enhancement.	Q4 2005	

### POLICY STATEMENT

The Parish Council will support through the planning processes any initiative to enhance existing premises to provide new shopping or post office services.

The Council will support any initiatives to enhance the village hall facilities. The Council will support any initiatives to improve the delivery of cheaper fuel options to the parish.



## 6 Communication & Local Government

### THE VISION

All the information required on a day to day basis and to enhance the life of those in the parish is available easily through a choice of channels - local free newspapers, notice boards, web site and Parish Magazine.

### THE ISSUES

- CO1 Easy access to district and county council information and services
- CO2 No free newspaper deliveries
- CO3 Lack of notice boards
- CO4 Need to develop the web site
- CO5 Parish magazine needs to be supported and developed

### THE MAIN ACTIONS

- CO1 Education by council members.
- CO2 Investigate options for distribution.
- CO3 Agree locations and raise funding.
- CO4 Review web site content and future structure and set out a development plan.
- CO5 Continue to support and contribute to the Parish Magazine.

### TIMESCALE

- Q1 2005 and ongoing
- Q1 2005
- Q3 2005
- Q4 2005
- Ongoing

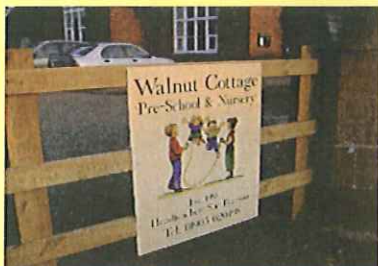
### INVOLVEMENT

The Parish Council  
MHDC  
WCC



### POLICY STATEMENT

The Parish Council will continue to encourage initiatives to improve communication, with particular focus on the development of the Shrawley web site.



## 7 Education, Employment & Training

### THE VISION

Local schools up to the age of 11 are maintained and developed and local education classes are available within the Parish if the demand justifies it. Local employment will include the agricultural sector together with more people working from home as access to broadband technology is improved.

### THE ISSUES

- ED1/ED2 Need to ensure the retention of the local nursery school in Shrawley and schools at Astley & Great Witley
- ED3 Encouragement of agricultural related industries, small businesses and working from home
- ED4/ED5 Need to encourage local adult education opportunities including IT

### THE MAIN ACTIONS

- ED1/ED2 Provide support for the existing schools at Astley & Great Witley and set out a plan for obtaining the necessary funding for modernising Walnut Cottage, the location for nursery education.
- ED3 Promote the use of local services, facilitate access to grant funding, and access to Broadband technology.
- ED4 Investigate the provision of adult education classes within the village.

### TIMESCALE

- Ongoing
- Q3 2005
- Q3 2005

### INVOLVEMENT

The Parish Council  
Village Hall  
Trustees  
WCC

### POLICY STATEMENT

The Parish Council will continue to support the existing local schools, and in particular the need for significant grant funding for the modernisation of Walnut Cottage.

The Council will support enhancements to local businesses which do not conflict with the environmental policies.

## THE ISSUES

SR1

Significant investment still needed in the Village Hall

SR2

Provision of local adult recreational classes

SR3/SR4

Lack of recreational facilities and open space for older children

SR5

Lack of readily available definitive footpath maps



## 8 Sport, Recreation & Leisure

### THE VISION

A thriving and modernised Village Hall available to all. Leisure outdoor activities will remain primarily walking and we will have a footpath network that is well signposted and free of obstructions.

#### THE MAIN ACTIONS

SR1

Funding required for village hall enhancements.

SR2/SR3/SR4

Investigation of demand and agree a plan.

SR5

Using the definitive map, produce information sheets and agree a publicity policy.

#### TIMESCALE

Q1 2005 and ongoing

Q2 2005

Q2 2005

#### INVOLVEMENT

The Parish Council  
Village Hall Trustees  
WCC  
Forestry Commission  
Local pub owners

### POLICY STATEMENT

The Parish Council will actively support the Village Hall as an important amenity within the village.

The Council will work with Worcestershire County Council to ensure that the footpaths within the village are regularly cleared and properly signposted and to remind local landowners of their responsibility to keep hedges well trimmed where they border footpaths.



## THE ISSUES

PS1

Lack of local police service

PS2

Difficulties in collecting prescriptions

PS3

Access to Worcester Royal Hospital

PS4

Emergency response times

PS5

No first responder/local emergency service

PS6

Neighbourhood Watch



## 9 Emergency, Health & Public Services

### THE VISION

A crime free parish with an effective Neighbourhood Watch scheme and good relations with the local police. A support process set up to ensure that all those living in the parish have the ability to access local health services when they need it.

#### THE MAIN ACTIONS

PS1/PS6

Complete the implementation of a Neighbourhood Watch scheme.

PS2/PS3

Ascertain problems and investigate existing self help schemes. Highlight transport and parking problems at Worcester Royal Hospital.

PS4/PS5

Ascertain expected response times, and assess the need for contingency arrangements, including any willing first responders.

#### TIMESCALE

Q1 2005

Q3 2005

Q3 2005

#### INVOLVEMENT

The Parish Council  
West Mercia Police  
Local Health Trusts  
Hereford & Worcester Fire Service

### POLICY STATEMENT

The Parish Council will support a Neighbourhood Watch scheme and any initiatives to reduce crime.

The Council will facilitate the setting up of support groups to ensure access to local health services.



## Shrawley Parish - Useful Contacts

### THE PARISH COUNCIL:

Clerk to the Council: Sheila Mills 01299 822412

The Council usually meets in the village hall on the 2nd Wednesday in every other month, dates are published in the Parish Magazine

Parish Councillors: Richard Tesh (Chairman) 01299 879266, Peter Burkes 01905 621040, Chris Freeman 01299 827404, Barbara Jones 01905 621286, Tom Marsden 01905 620858, Jenny Nicholson 01905 620471, Mike Partridge 01905 620056

Malvern Hills District Councillor: Susan Gill 01905 620346

Worcestershire County Councillor: Alwyn Davies 01886 888263

Parish Web Site: [www.shrawley.org.uk](http://www.shrawley.org.uk)

Parish Magazine: Sheila Corbett 01299 822142

Neighbourhood Watch: Tony Jones 01905 621286, Richard Tesh 01299 879266

Rector: Rev. Alan Norkett 01905 620489 (Emergencies only on Mondays)

### PARISH SOCIETIES and ORGANISATIONS

Bellringers	John Westwood	01905 620859		
Fete Committee	Richard Tesh	01299 879266		
Friendship Club	Irene Holloway	01905 620117	Jane Spragg	01299 823261
Friends of St Mary's Church	Chris Martin	01905 620702		
Horticultural Society	Chris Dring	01905 620025	Anne Yarnold	01905 620406
History Society	Valerie Powick	01905 620488		
Shooting Club	Peter Hollingsworth	01299 896425		
Village Hall Trustees	Valerie Powick	01905 620488	Jenny Nicholson	01905 620471
Walking Club	Jenny Nicholson	01905 620471		

Information correct at December 2004